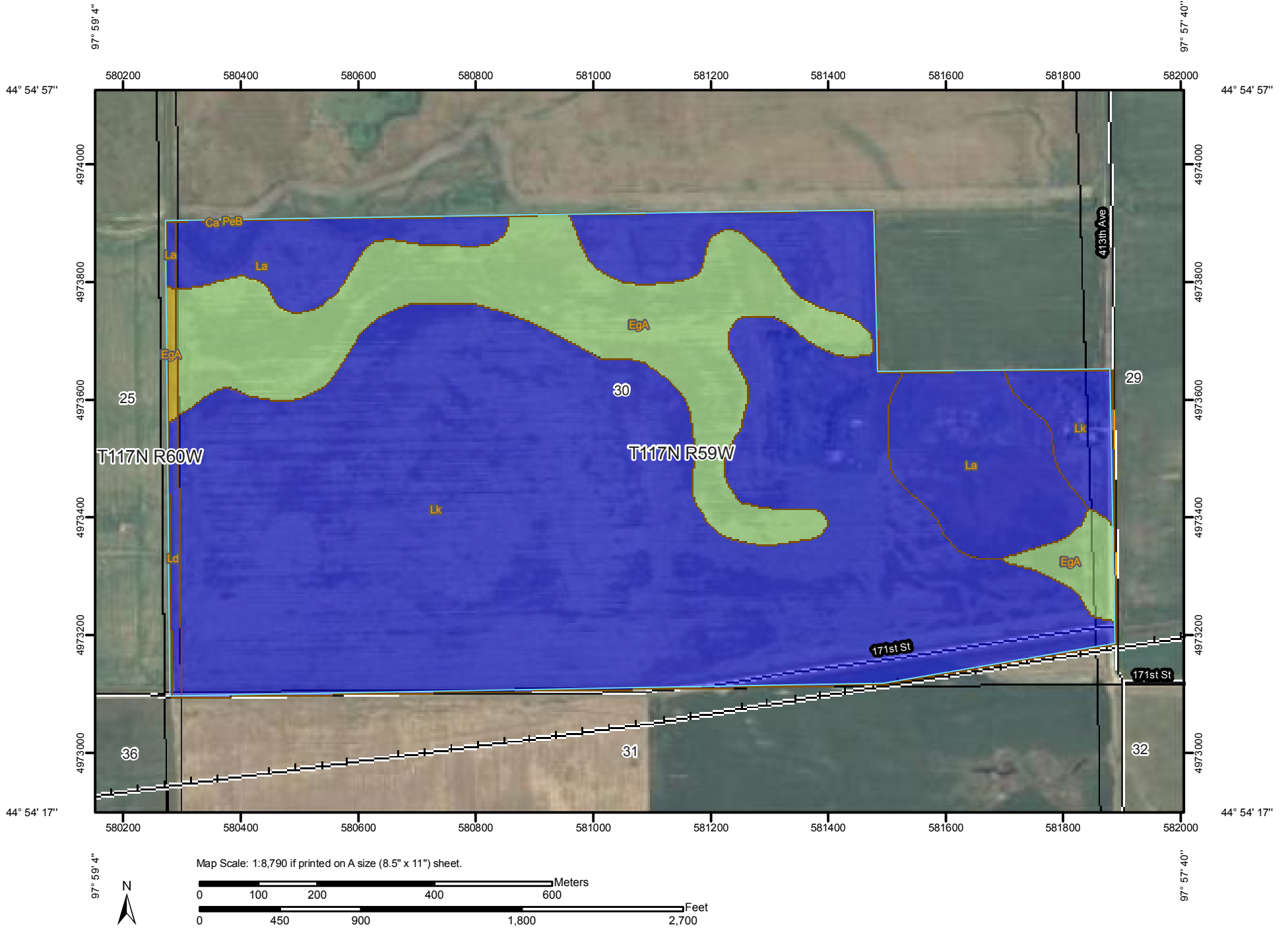



Crop Productivity Index—Clark County, South Dakota, and Spink County, South Dakota
(Tract 1 or North Farm Productivity Rating)



MAP LEGEND

Area of Interest (AOI)


 Area of Interest (AOI)

Soils


 Soil Map Units

Soil Ratings


 <= 30

 > 30 AND <= 62

 > 62 AND <= 63


 > 63 AND <= 66

 > 66 AND <= 93

 Not rated or not available

Political Features

 Cities

 PLSS Township and Range

 PLSS Section

Water Features

 Oceans

 Streams and Canals


Transportation

 Rails

 Interstate Highways

 US Routes

 Major Roads

 Local Roads

MAP INFORMATION

Map Scale: 1:8,790 if printed on A size (8.5" × 11") sheet.

The soil surveys that comprise your AOI were mapped at scales ranging from 1:20,000 to 1:24,000.

Please rely on the bar scale on each map sheet for accurate map measurements.

Source of Map: Natural Resources Conservation Service
Web Soil Survey URL: <http://websoilsurvey.nrcs.usda.gov>
Coordinate System: UTM Zone 14N NAD83

This product is generated from the USDA-NRCS certified data as of the version date(s) listed below.

Soil Survey Area: Clark County, South Dakota
Survey Area Data: Version 13, Oct 15, 2008

Soil Survey Area: Spink County, South Dakota
Survey Area Data: Version 11, Aug 19, 2009

Your area of interest (AOI) includes more than one soil survey area. These survey areas may have been mapped at different scales, with a different land use in mind, at different times, or at different levels of detail. This may result in map unit symbols, soil properties, and interpretations that do not completely agree across soil survey area boundaries.

Date(s) aerial images were photographed: 7/13/2004

The orthophoto or other base map on which the soil lines were compiled and digitized probably differs from the background imagery displayed on these maps. As a result, some minor shifting of map unit boundaries may be evident.

Crop Productivity Index

Crop Productivity Index— Summary by Map Unit — Clark County, South Dakota				
Map unit symbol	Map unit name	Rating	Acres in AOI	Percent of AOI
Ca	Cavour-Ferney loams	30	0.0	0.0%
EgA	Egeland-Embden complex, 0 to 2 percent slopes	63	52.6	18.1%
La	La Prairie loam	92	30.9	10.6%
Lk	LaDelle silt loam	93	203.4	70.1%
PeB	Peever clay loam, 2 to 6 percent slopes	66	0.0	0.0%
Subtotals for Soil Survey Area			287.0	98.9%
Totals for Area of Interest			290.2	100.0%

Crop Productivity Index— Summary by Map Unit — Spink County, South Dakota				
Map unit symbol	Map unit name	Rating	Acres in AOI	Percent of AOI
EgA	Egeland-Embden complex, 0 to 2 percent slopes	62	0.9	0.3%
La	La Prairie loam, 0 to 2 percent slopes	92	0.4	0.2%
Ld	LaDelle silt loam, 0 to 2 percent slopes	93	1.9	0.6%
Subtotals for Soil Survey Area			3.2	1.1%
Totals for Area of Interest			290.2	100.0%

Description

Crop productivity index ratings provide a relative ranking of soils based on their potential for intensive crop production. An index can be used to rate the potential yield of one soil against that of another over a period of time. Ratings range from 0 to 100. The higher numbers indicate higher production potential. The rating is not crop specific.

When the soils are rated, the following assumptions are made: a) adequate management, b) natural weather conditions (no irrigation), c) artificial drainage where required, d) no frequent flooding on the lower lying soils, and e) no land leveling or terracing. Even though predicted average yields will change with time, the productivity indices are expected to remain relatively constant in relation to one another over time.

Rating Options

Aggregation Method: Weighted Average

Component Percent Cutoff: None Specified

Tie-break Rule: Higher

Interpret Nulls as Zero: Yes