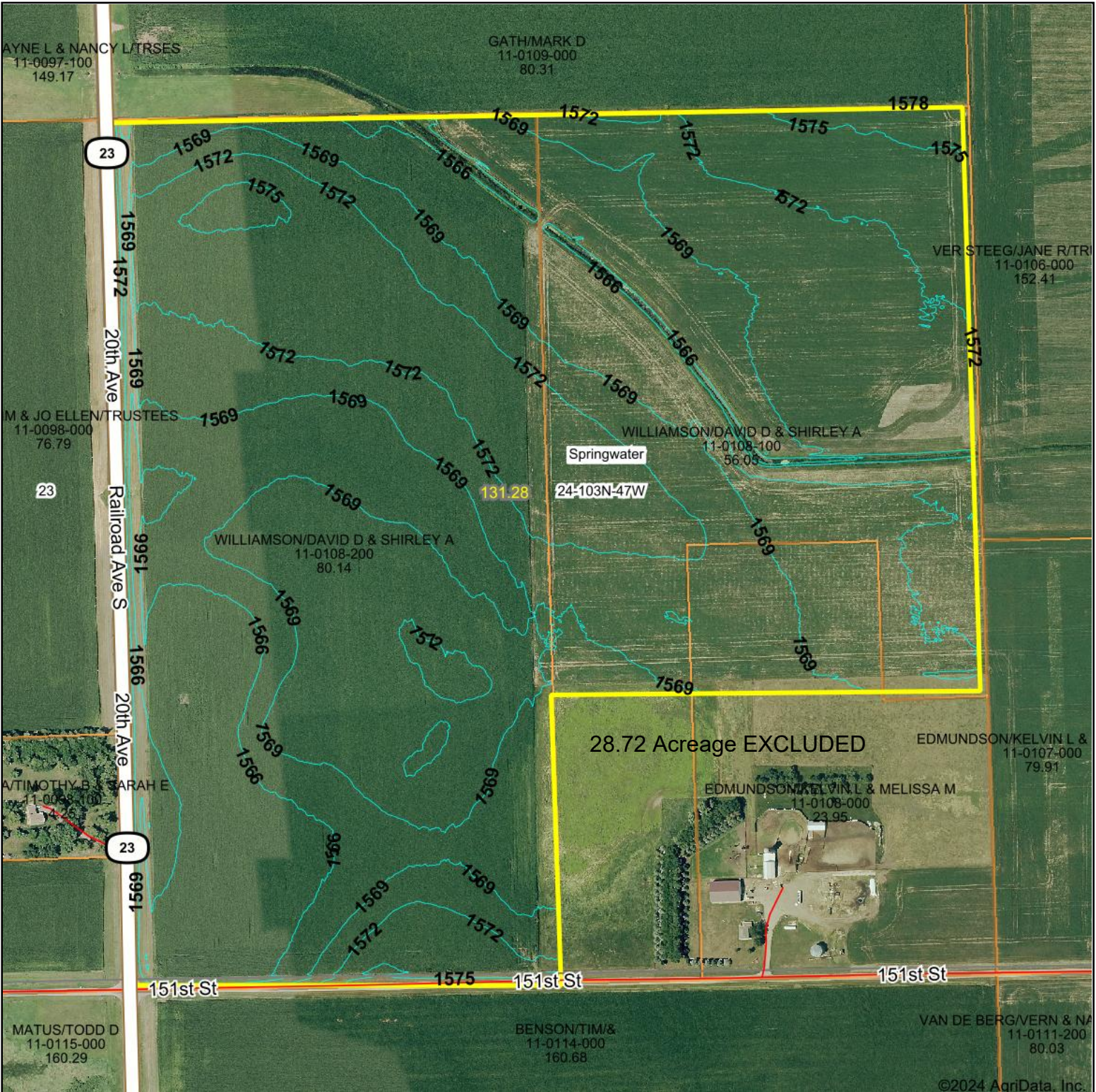


Topography Contours



©2024 AgriData, Inc.



© AgriData, Inc. 2023 www.AgriDataInc.com

Source: USGS 1 meter dem

Interval(ft): 3.0

Min: 1,562.9

Max: 1,577.2

Range: 14.3

Average: 1,569.7

Standard Deviation: 2.69 ft

0ft 473ft 947ft



9/24/2024

24-103N-47W
Rock County
Minnesota

Boundary Center: 43° 42' 26.98, -96° 25' 37.8