



This all-steel 1934 Ford three-window coupe powered by a Chevy 454-cid V-8 sold for \$65,000 at the Slaymaker Collection sale in Fostoria, Iowa, presented by VanDerBrink Auctions.

Slaymaker sale was a hot rod smorgasbord

■ Ron Kowalke reporting

FESTORIA, Iowa _ To say that Jack Slaymaker was focused on hot rods during his lifetime doesn't do justice to the wealth of parts he amassed to complement his passion for these unique vehicles. His vast collection of cars and trucks, parts and memorabilia was offered on July 24 at a no-reserve sale presented by VanDerBrink Auctions.

The auction attracted 674 bidders, both online and onsite. The 26 cars and trucks featured in the sale sold for \$284,800, not including the buyer's premium. The Slaymaker Collection also offered 58 Ford-Lincoln-Mercury-Edsel steering wheels, both new-old-stock and restored, seven of which each sold for \$1,000 or more.

To no one's surprise, four of the five top-selling vehicles were hot rods: Top sale was an all-steel 1934 Ford three-window coupe, chopped top, Chevrolet 454-cid V-8, \$65,000; 2. was an all-steel '32 Ford five-window chopped hi-boy coupe, Chevy 350-cid V-8, \$34,000; 3. was a Matranga-clone '40 Mercury coupe, chopped top, Chevy 350-cid V-8; \$29,000; 4. was a '29 Ford Model A woodie station wagon, \$25,000; and, 5. was a '30 Ford panel delivery, mildly updated (12-volt electrics, lowered suspension), doors emblazoned with "Haunted Gulch Dude Ranch, Butte, Montana," \$23,000.

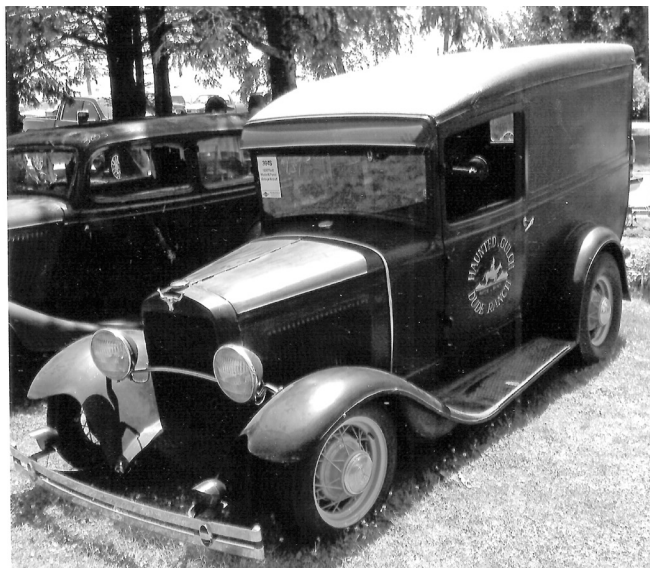
Interesting memorabilia on offer included a pair of rare single-seater Maytag racers in rough condition that sold for \$3,500 and \$300, respectively. One of the "buzziest" pieces

offered was a 1950s half-shell, open-face crash helmet reportedly painted by the legendary Von Dutch that was bought for \$2,900.

While a complete 1953 Cadillac Series 62 hardtop in condition #5 that sold for \$2,400 was a noteworthy buy, a more interesting purchase from a history standpoint may have been overlooked in all the hot rod hoopla. Parked off by itself was a 1951 Nash Rambler Deliveryman two-door station wagon in #4 condition. The single-seat commercial package carrier is one of only nine produced in '51, its debut year. It sold for \$11,250.



One of only nine produced in its debut year of 1951, this Nash Rambler Deliveryman two-door station wagon sold for \$11,250.



This mildly updated 1930 Ford panel delivery sold for \$23,000. The doors read "Haunted Gulch Dude Ranch, Butte, Montana."



This all-steel 1932 Ford five-window hi-boy coupe powered by a Chevy 350-cid V-8 sold for \$34,000.



This 1936 De Soto Airstream touring sedan sold for \$9,250.



VanDerBrink Auctions founder Yvette VanDerBrink displays a 1950s half-shell crash helmet reportedly painted by the legendary Von Dutch. It sold for \$2,900.

VANDERBRINK SLAYMAKER SALE

Presented by VanDerBrink Auctions

Fostoria, Iowa

July 24, 2021

All vehicles offered sold

Buyer's premium not included in prices listed below.

Ron Kowalke reporting

1953 Cadillac Series 62 2d HT V8/AT.....	\$2,400	5
1929 Chevrolet International 2d 1/2T sed del 6cyl/3spd/in pieces/9640 produced	\$3,600	6
1936 Chevrolet FC 2d sed del/no drivetrain/in pieces (parts stored in cargo area)	\$6,000	6
1936 Chevrolet Standard 2d sed 6cyl/3spd	\$4,100	4
1939 Chevrolet Master 85 4d sed 6cyl/3spd.....	\$1,500	6
1946 Chevrolet Fleetline Sportmaster 4d sed/6cyl/3spd/7501 produced	\$7,500	4
1948 Chevrolet Fleetline Sportmaster 4d sed 6cyl/3spd	\$2,200	5
1948 Chevrolet Fleetline Sportmaster 4d sed 6cyl/3spd	\$1,900	6
1948 Chevrolet Fleetline 4d sed mod/lowrider/V8/AT/sunvisor/dual spotlights/aftermarket wheels.....	\$11,000	3
1936 De Soto Airstream S1 4d sed 6cyl/3spd/fender skirts/fog lamps	\$9,250	4
1926 Ford Model T 2d rdstr rod 4cyl/3spd/open top and engine bay	\$5,750	4
1929 Ford Model A 4d phae rod 4cyl/3spd/no top	\$5,000	4
1929 Ford Model A 4d sta wag woodie 4cyl/3spd/canvas side curtains	\$25,000	3
1929 Ford Model A 2d 1/2T panel no drivetrain/no chassis/in pieces.....	\$3,000	6
1930 Ford Model A 2d 1/2T Panel 4cyl/3spd/12volt elec./"Hanted Gulch Dude Ranch Butte Montana" lettering	\$23,000	3
1930 Ford Model A 4d phae rod 4cyl/3spd/no top	\$5,750	4
1930 Ford Model A 2d sed 4cyl/3spd/rear spare	\$4,000	6

1932 Ford Model 18 2d cpe 5-window/rod/Chevy 350 V8/4spd/all steel/highboy (no fenders)/chopped top/ in primer	\$34,000	3
1933 Ford Model C 2d sed 4cyl/3spd/rear spare/unrestored/ most upholstery missing	\$9,500	5
1934 Ford Model 40 2d cpe 3-window/rod/Chevy 454cid V8/ AT/all steel/chopped top/former Rodder's Journal cover car	\$65,000	3
1951 Kaiser Special 2d rdstr/mod/converted from sedan/6cyl/ AT	\$3,900	4
1940 Mercury 09A 2d cpe/rod/clone of Barris "Matranga Merc"/Chevy 350 V8/AT/chopped top/unfinished build	\$29,000	4
1951 Nash Rambler Deliveryman 2d sta wag del 6cyl/3spd/one of 9 produced	\$11,250	4
1951 Nash Rambler 10 2d sta wag 6cyl/3spd/one of 5568 produced.....	\$400	6
1930s Maytag 1P race car open cockpit/498 produced.....	\$300	6
1930s Maytag 1P race car 1cyl open cockpit/498 produced	\$3,500	5
1940s 3/4 Midget Race Car 4cyl #8R	\$2,800	3
1950s Helmet halfshell open-face, painted/pinstriped by Von Dutch	\$2,900	3