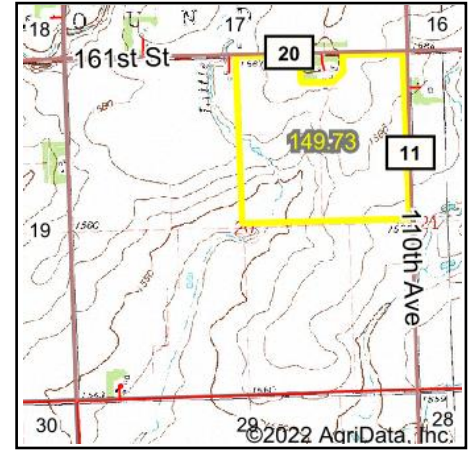
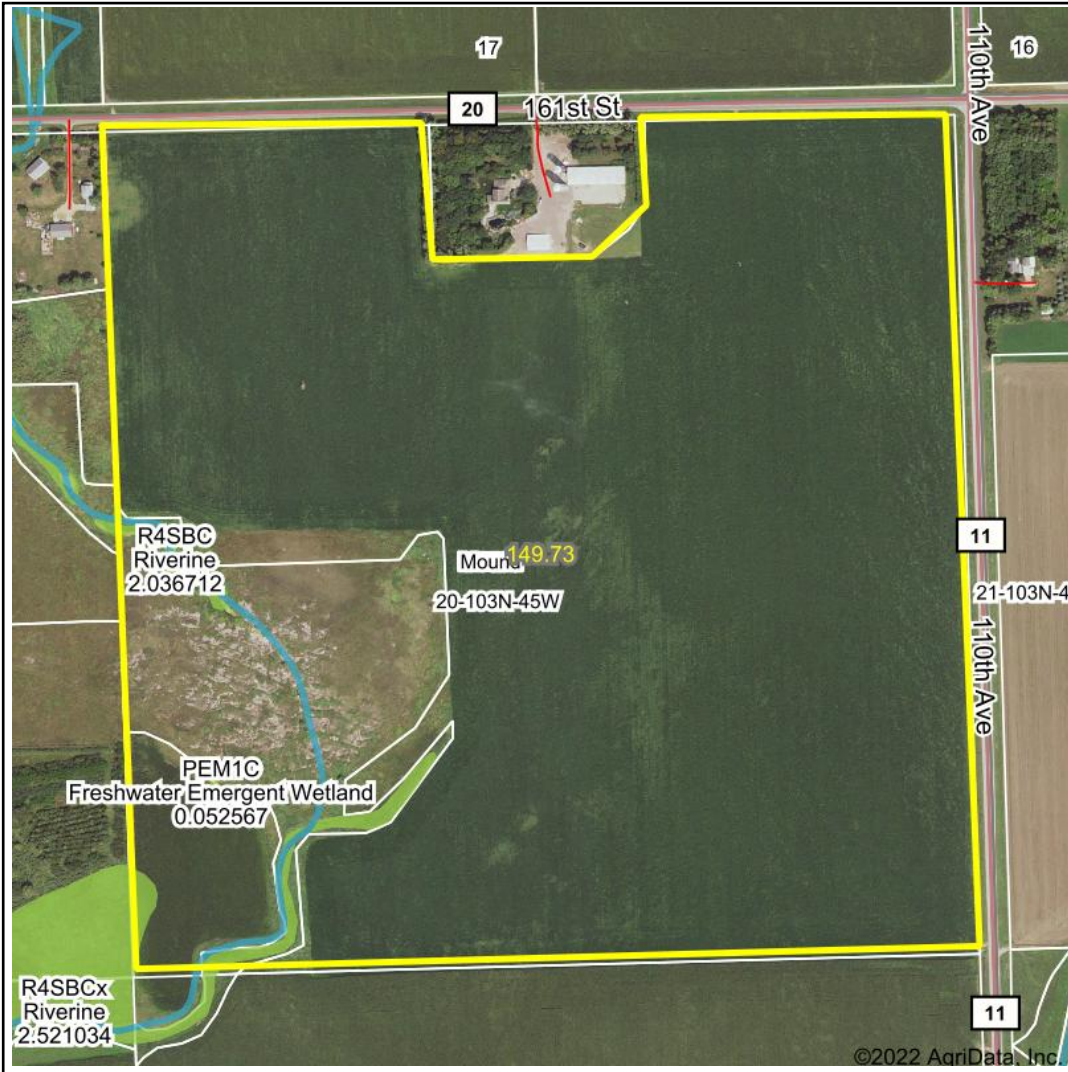


Wetlands Map



State: **Minnesota**
 Location: **20-103N-45W**
 County: **Rock**
 Township: **Mound**
 Date: **5/10/2022**



Maps Provided By:



© AgriData, Inc. 2021 www.AgriDataInc.com



Classification Code	Type	Acres
R4SBC	Riverine	0.88
PEM1C	Freshwater Emergent Wetland	0.72
PEM1B	Freshwater Emergent Wetland	0.43
PEM1A	Freshwater Emergent Wetland	0.27
	Total Acres	2.30

Data Source: National Wetlands Inventory website. U.S. DoI, Fish and Wildlife Service, Washington, D.C. <http://www.fws.gov/wetlands/>